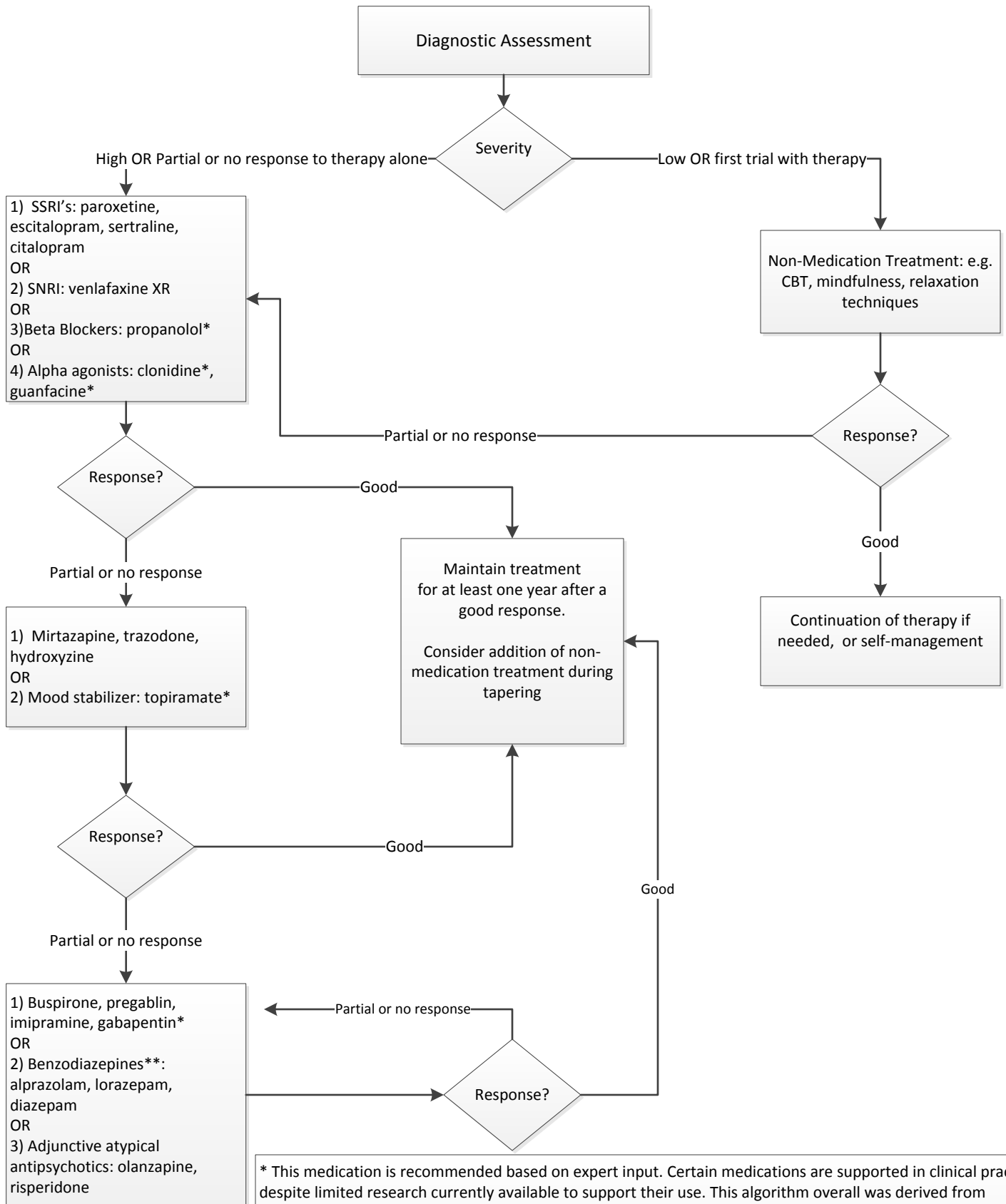


Generalized Anxiety Disorder Medication Algorithm



* This medication is recommended based on expert input. Certain medications are supported in clinical practice despite limited research currently available to support their use. This algorithm overall was derived from evidence-based literature and controlled trials, along with expert consensus on best practices.
 **Benzodiazepines should be used conservatively, ideally only for short-term symptom stabilization and/or to manage SSRI initiation effects, and should seldom be prescribed long-term for anxiety. Be sure to monitor for side effects, such as sedation, cognitive impairment and ataxia, increased dependence or overuse.