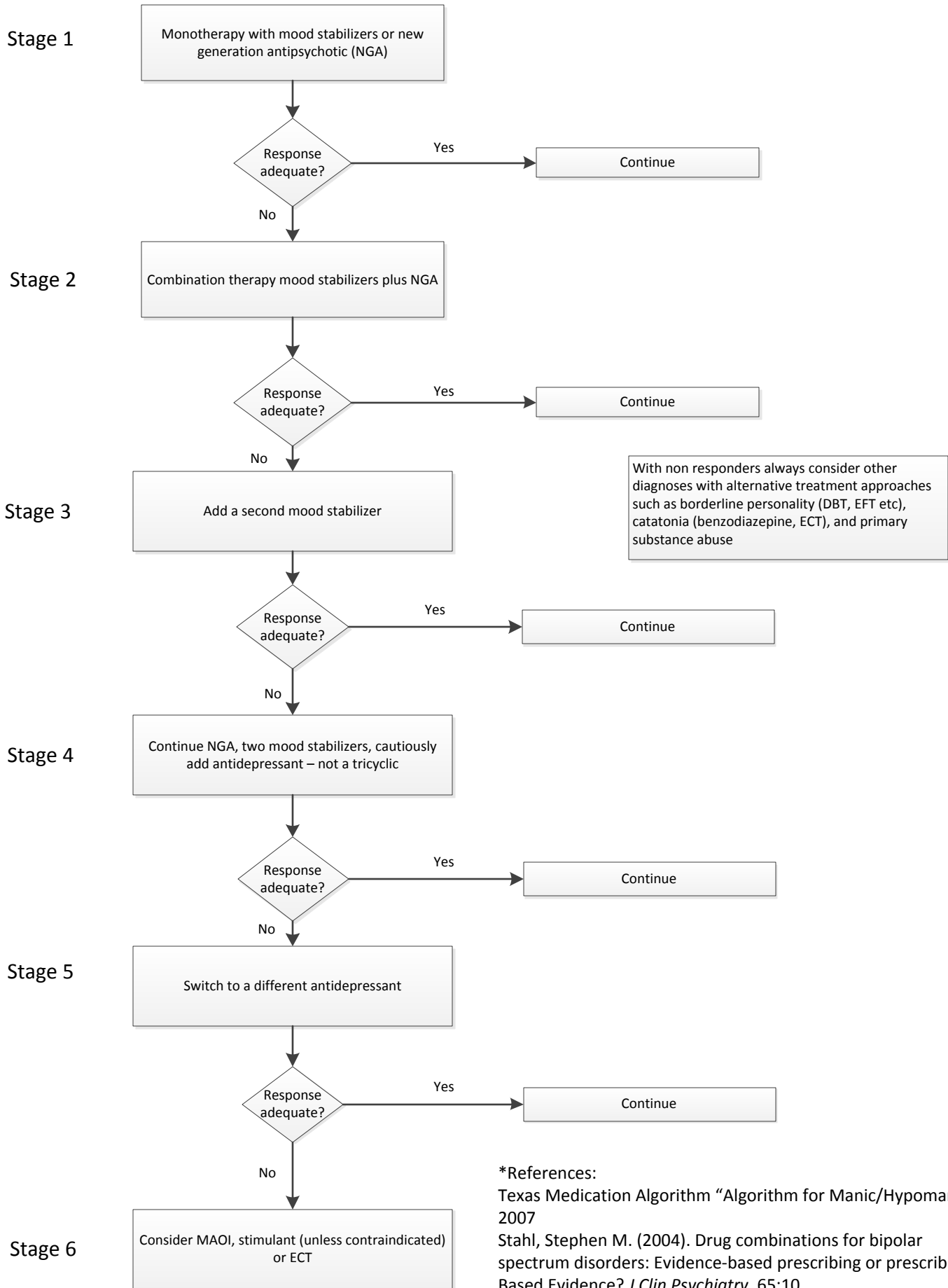


# Algorithm for Bipolar Depression\*



\*References:  
 Texas Medication Algorithm “Algorithm for Manic/Hypomanic” 2007  
 Stahl, Stephen M. (2004). Drug combinations for bipolar spectrum disorders: Evidence-based prescribing or prescribing-Based Evidence? *J Clin Psychiatry*, 65:10.